



Encl. 9-17
PANUKE F-09

Datum elevation: 39.9 m aMSL
X-coordinate: 679697.1
Y-coordinate: 4852562.6
TD (ft MD): 3815.0
Drilled in: 2000 (PanCanadian)

Scale 1:4000
UWI: F-09 Well: PANUKE F-09



PLAY FAIRWAY ANALYSIS
OFFSHORE NOVA SCOTIA - CANADA
June 2011

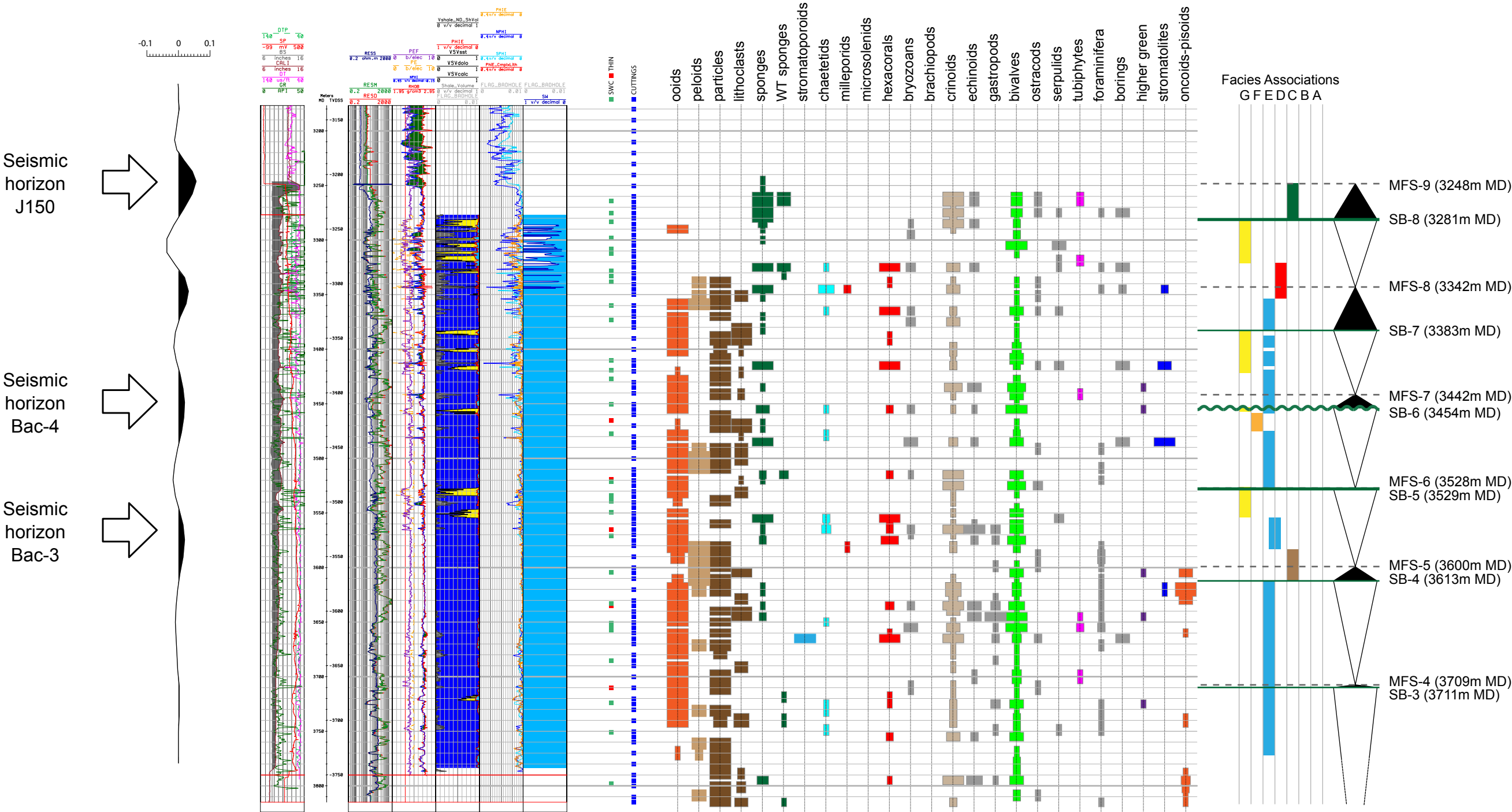
Seismic Interpretation
based on reflectivity

Petrophysical
Evaluation

Samples

Sedimentological Data
(adapted from GeoTours Consulting Inc.)

Stratigraphic Breakdown



PETROPHYSICAL EVALUATION

- Sandstone
- Claystone
- Limestone
- Dolomite
- Porosity

FACIES ASSOCIATIONS

- G1 - Shallow-water siliciclastics (delta to prodelta)
- G2 - Muddy (lagoon) platform interior
- F - Mixed carbonate-siliciclastic platform interior
- E - High-energy oolitic sand shoals
- D - "Clear" shallow-water corallgal reef margin

- C1 - "Turbid" shallow-water sponge reef mounds
- C - Proximal foreslope
- B - Distal foreslope
- A - Deep marine shelf

SEQUENCE STRATIGRAPHIC BREAKDOWN

- MFS - Maximum Flooding Surface
- SB - Sequence Boundary
- MFS - Maximum Flooding Surface